

Product Datasheet

Product Name: Input Metered Rack PDU

SKU: AKN113041U

Product Code: K12HTJ5-24A3606A1791EES01-2QT

Overview

The Apislogik Input metered rack PDU can monitor input parameters in real-time, such as current, voltage, frequency, power factor, power load, energy measurement, temperature, and humidity. The voltage and current accuracy is $\pm 1\%$. The power and energy accuracy is $\pm 2\%$. The measured data can be transmitted via the network port.

Features

■ Input

Support for IEC60309, NEMA, UK, SCHUKO, HARTING, TEC etc.

■ Output

Support for C13, C19, C39, NEMA, UK, SCHUKO, IEC self-locking socket.

■ Hydraulic magnetic circuit breaker

Stable operation in environments with a temperature of $55^{\circ}\text{C}/131^{\circ}\text{F}$. Provides respective protection for each branch of output. (Note: Not all models provide hydraulic magnetic circuit breakers)

■ Hot-swap LED indicator lights

Customers can replace hot-swap LED indicator lights without powering off the system. (Note: Not all models have hot-swap LED indicator lights)

■ Mounting method

Toolless mounting peg and bracket mounting, two types of mounting options are available for selection.

■ Hot-swap network management meter

Allows users to replace the NMM (Network Management Meter) without shutting down the PDU.

The NMM supports SNMP V1, V2, V3, HTTP, MODBUS, TELNET, WEB, encryption, password, and authorization options.

■ Ports and Cascading

Provides 2 RJ45 ports and 2 RJ11 ports.

The 2 RJ45 ports, one is a 10/100M port, supporting both Ethernet and RS485 with auto-negotiation. The other port is an RS485 cascading port, supporting 1 master and 19 slave devices to be connected in a cascade. Up to 20 PDUs can share a single IP address.

The 2 RJ11 ports consist of 1 temperature and humidity sensor port and 1 leak sensor or smoke sensor port.

■ LCD display

Allows local access, providing user interactive display of voltage, current or active power, alarms, configuration information, and more.

■ Alarms and logs

Provides real-time remote monitoring of the output power Load . Alarm thresholds can be configured, and both network and visual alarms are available. The logs include the most recent events along with their date and time of occurrence. Up to 100 events are stored and displayed in the logs.

Specifications

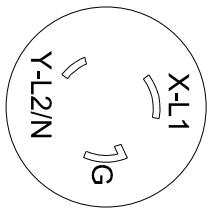
Input Parameters	
Input voltage	200-240 V AC;2W+PE
Max current(phase)	30A
Rate current (phase)	24A
Input frequency	50/60Hz
Power capacity	5.52W
Input plug	NEMA L6-30P
Input wire	(3m) 3*10AWG
Output Parameters	
Output voltage	200-240 V AC
Rate current(phase)	24A
Output frequency	50/60Hz
Outlets	(36)IEC C13 (6)IEC C19
Protective Device	
Circuit breaker	2*20A/2P
Hot-swap LED indicator lights	/
Physical Parameters	
Rack mount	0U
Shell color	Black
Shell material	Aluminum Alloy
Power input method	Top feed

Mounting location	dual-sided
Mounting mode	Peg
Dimensions(H*W*D)	1791mm*55.6mm*49mm
Net weight	9KG
Shipping dimensions(H*W*D)	2100mm*87mm*115mm
Environmental Parameters	
Operating elevation	0-3000m (0-10000 ft)
Operation Temperature	-10~60 °C
Humidity(operation/storage)	5-95%RH, non-condensing
Storage Temperature	-20~70 °C
Storage elevation	0-15000m (0-50000 ft)
Compliance	
Certification	FCC、UL、CUL

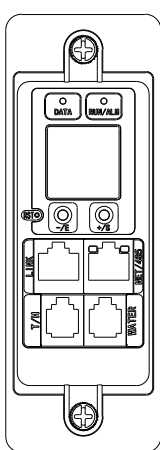
* Product Characteristics subject to change without prior notice.

* Disclaimer: This documentation is not intended as a substitute for and is not to be used for determining suitability or reliability of these products for specific user applications

Version History					
Version	Description	Draft	Review	Approval	Date
V1.2	First version	Jun Xiong	LQ Li	YH Chen	6/20/2023

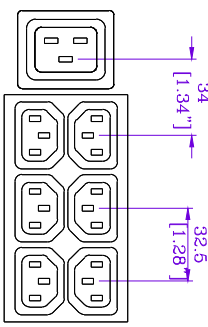
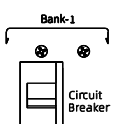


(NEMA L6-30P PLUG-ENLARGED)

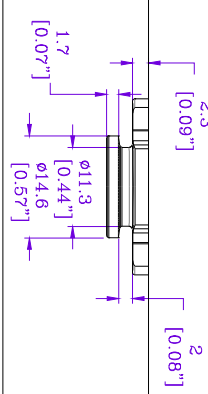


VIEW A

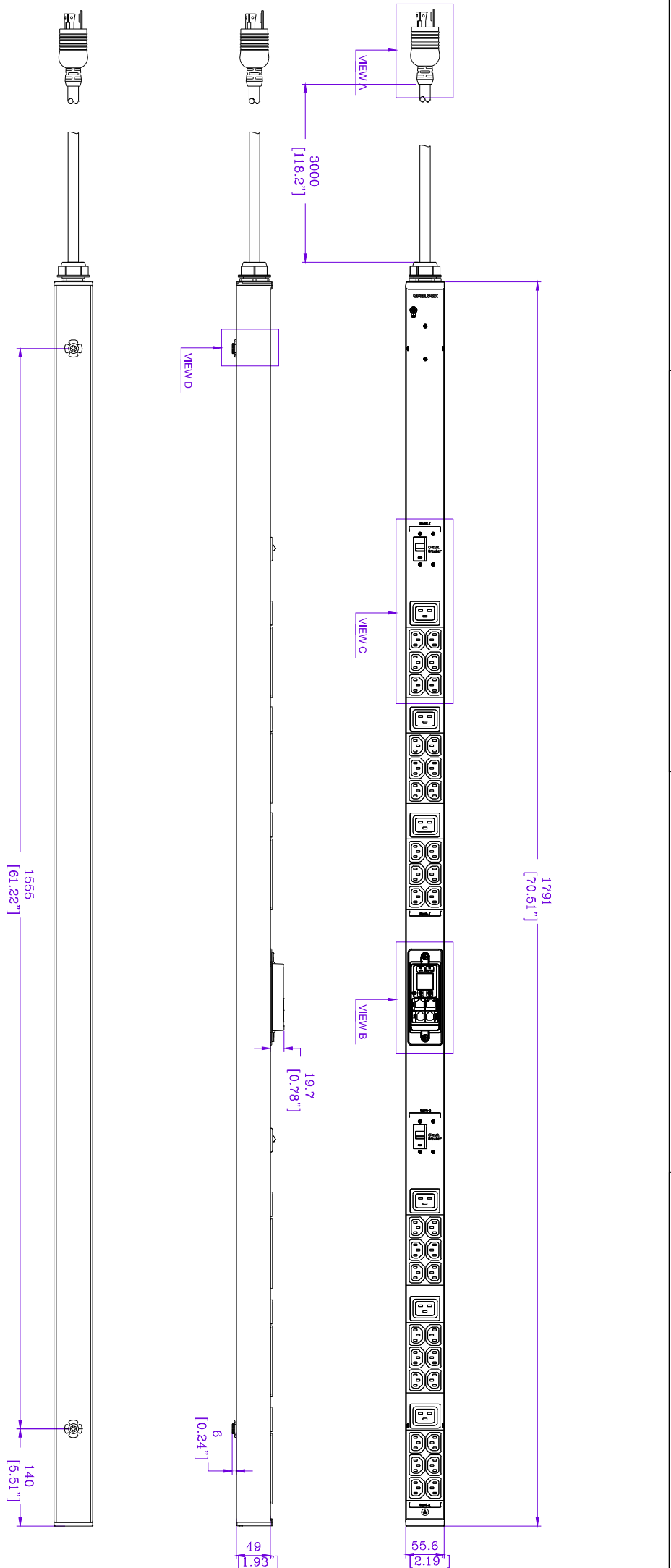
VIEW B



VIEW C



VIEW D



REV.	DESCRIPTION	DRAWN	CHECKED	APP'D	DATE
A	First edition	Jun Xiong	LQ LI	YH Chen	6/20/2023
B					
C					
D					
E					

NOTES:	<p>1. INSTALLATION SHALL COMPLY WITH ALL APPLICABLE NATIONAL, STATE AND LOCAL CODES.</p> <p>2. PLEASE REFER TO PRODUCT DOCUMENTATION FOR FURTHER INFORMATION.</p> <p>3. UNLESS OTHERWISE SPECIFIED, ALL DIMENSIONS ARE IN MILLIMETERS (INCHES).</p>
APISMOON PROPRIETARY AND CONFIDENTIAL INFORMATION	<p>This document is the property of APISMOON and contains proprietary information of APISMOON. This document is loaned on the express condition that neither it nor the information contained herein shall be disclosed to others without the express written consent of APISMOON. This document shall be returned to APISMOON upon its request.</p>
Product Name: Metered Rack PDU	Input Cable: 3m 3*10AWG
Outlet: (3) IEC C13	Rack Unit: 1U
Circuit Breaker: (2) 20A 2P	Mounting Location: Dual Sided
Enclosure Material: Aluminum Alloy	Enclosure Color: Black
INPUT: 200-240 V AC 2W-PE 50/60Hz 24A	OUTPUT: 200-240 V AC 16A PER BANK 24A TOTAL
C13: 12A PER OUTLET	C19: 16A PER OUTLET

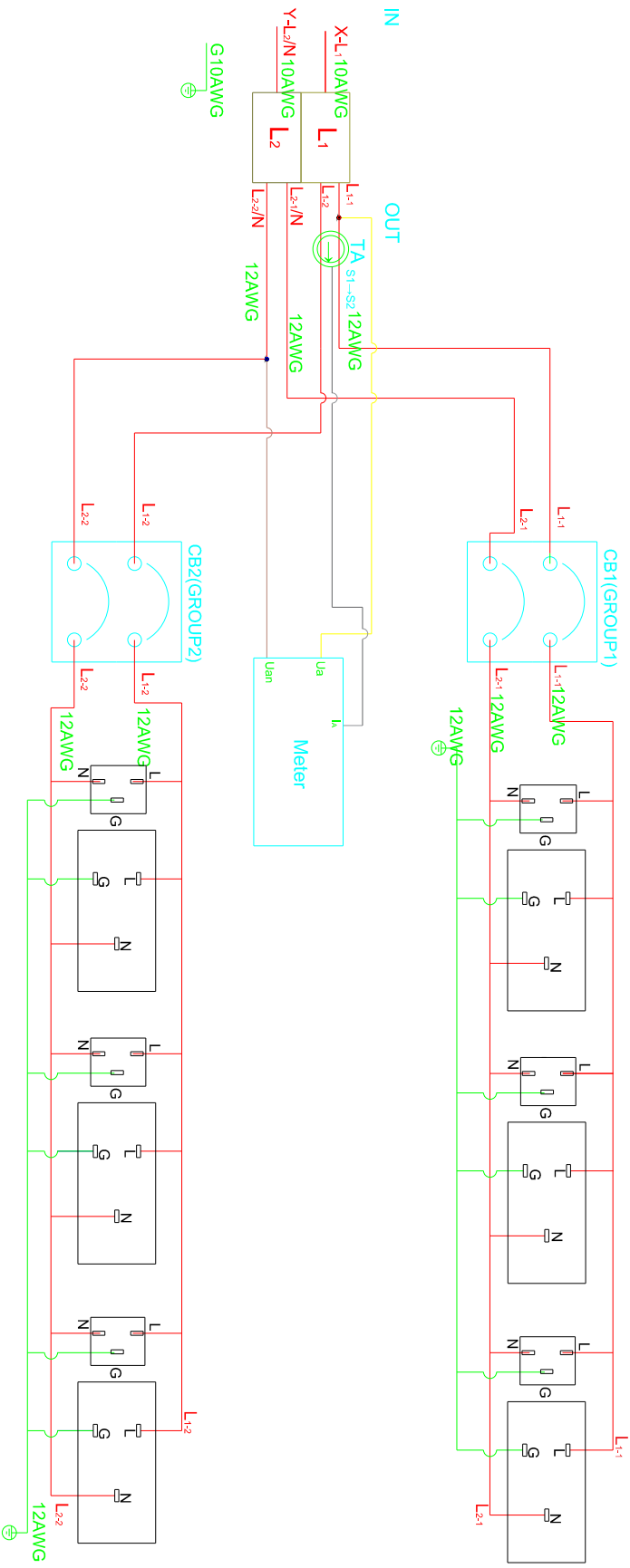
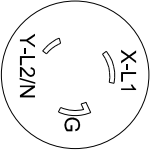
DWG NO.	HW-039230620304	SKU	AKN113041U
MODEL			
PRODUCT CODE	K12HT15-24A3606A1791EES01-20T		

SHEET 1 OF 2	REV.
	A



DO NOT SCALE DRAWING

Symbol Interpretation	
XT	Terminal blocks
TA	Current transformer
PA	Intelligent meter
XS	jack
PE	landing
IN	Input
OUT	Output
F	Hot plug lightning protection
CB	Circuit breaker
S1/S2	Current transformer Input/output

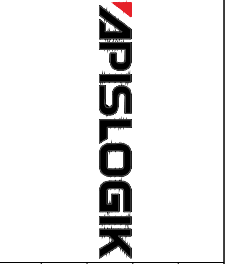


Note: The color of the connecting line is only for reference to the phase pole, and the actual color is subject to the actual material.

REV.	DESCRIPTION	DRAWN	CHECKEN	APPD	DATE
A	First edition	Jun Xiong	LQ LI	YH Chen	6/20/2023
B					
C					
D					
E					

NOTES:
 1. INSTALLATION SHALL COMPLY WITH ALL APPLICABLE NATIONAL, STATE AND LOCAL CODES.
 2. PLEASE REFER TO PRODUCT DOCUMENTATION FOR FURTHER INFORMATION.
 3. UNLESS OTHERWISE SPECIFIED, ALL DIMENSIONS ARE IN MILLIMETERS (INCHES).
 APISMCOON PROPRIETARY AND CONFIDENTIAL INFORMATION
 This document is the property of APISMCOON and contains proprietary information of APISMCOON. This document is loaned on the express condition that neither it nor the information contained therein shall be used by the recipient without the express written consent of APISMCOON. This document shall be returned to APISMCOON upon its request.

Product Name: Basic Rack PDU
 Input Cable: 3m 3*10AWG
 Outlet: (30) IEC C13 (6) IEC C19
 Circuit Breaker: (2) 20A 2P
 Enclosure Material: Aluminum Alloy
 Rack Unit: 0U
 Incoming Mode: Top Feed
 Mounting Location: Dual-Sided
 Enclosure Color: Black
 INPUT: 200-240 V AC, 2W+PE, 50/60Hz, 24A
 OUTPUT: 200-240 V AC, 16A PER BANK, 24A TOTAL
 C13: 12A PER OUTLET, 16A PER GANG
 C19: 16A PER OUTLET



DWG NO.	SKU
HW/039220620302	AKB013041U
MODEL	
PRODUCT CODE	
K10A1U5-24A3606A1791EES01-20T	
SHEET 2 OF 2	REV. A

DO NOT SCALE DRAWING