

VIP-PA-PWR/36XOE/ 4,0M/1756 - Front adapter



2908861

<https://www.phoenixcontact.com/us/products/2908861>

Please be informed that the data shown in this PDF document is generated from our online catalog. Please find the complete data in the user documentation. Our general terms of use for downloads are valid.



VIP VARIOFACE front adapter, with assembled shielded round cable for ControlLogix® 1756 I/O, 1 x 36 single wires can be connected

Your advantages

- Individual I/O modules lock to the controller for connection security
- Integrated lever aids in removal from I/O card
- Marking label can be attached
- 1:1 connection
- Open end at one end
- Individual wire marking: 1, 2, 3, 4, etc.
- Individual wires fitted with ferrules
- Shield connection: UL Type AWM, Style 1007 18 AWG (0.82 mm²) cable, black, 0.5 m length

Commercial data

Item number	2908861
Packing unit	1 pc
Note	Made to order (non-returnable)
Sales key	C423
Product key	CK232R
GTIN	4063151467890
Weight per piece (including packing)	2,136 g
Weight per piece (excluding packing)	2,088 g
Customs tariff number	85444290
Country of origin	US

2908861

<https://www.phoenixcontact.com/us/products/2908861>

Technical data

Product properties

Product type	Front adapter
--------------	---------------

Insulation characteristics

Overvoltage category	II
Pollution degree	2

Electrical properties

Max. permissible operating voltage	250 V AC/DC
Max. permissible current	3 A (per single wire at 60°C)
	4 A (per single wire at 40°C)

Supported controller ALLEN-BRADLEY ControlLogix

Suitable I/O card	1756-IB16D
	1756-IB16I
	1756-IB32
	1756-IF16
	1756-IF8
	1756-IF8I
	1756-IRT8I
	1756-OB16D
	1756-OB16I
	1756-OB32
	1756-HSC
	1756-IA16I
	1756-IA32
	1756-IB16IF
	1756-IB16ISOE
	1756-IF16H
	1756-IF4FXOF2F
	1756-IF8H
	1756-IF8IH
	1756-IH16I
	1756-IH16ISOE
	1756-IM16I
	1756-IR12
	1756-IT16
	1756-IV32
	1756-LSC8XIB8I
	1756-OA16I
1756-OB16IEF	
1756-OB16IEFS	

VIP-PA-PWR/36XOE/ 4,0M/1756 - Front adapter



2908861

<https://www.phoenixcontact.com/us/products/2908861>

	1756-OB16IS
	1756-OB8EI
	1756-OF8I
	1756-OF8IH
	1756-OH8I
	1756-OV32E
	1756-OW16I
	1756-OX8I

Connection data

Controller level

Connection method	Plug-in connection
Note	Can be plugged onto 36-pos. I/O modules

Field level

Connection method	Single wires
Number of connections	36
Number of positions	1
Note	The wires are marked and fitted with ferrules

Dimensions

Cable

Length	4 m
--------	-----

Cable/line

Number of positions	36
Shielded	yes
Conductor type	Assembled shielded round cable
AWG signal line	18
Conductor cross section	36x 0.82 mm ²
Wire diameter incl. insulation	1.7 mm ±0.0254
External cable diameter	15.88 mm ±0.3 mm
Outer sheath, material	PVC
External sheath, color	gray
Conductor material	Tin-plated Cu litz wires
Cable resistance	≤ 40 Ω/km (20 °C)
Insulation resistance	≥ 20 MΩ*km (20 °C)
Smallest bending radius, fixed installation	109.5 mm
Smallest bending radius, movable installation	156.2 mm
Halogen-free	no
Flame resistance	UL VW-1 CSA FT-1

1X1.0 [PVC]

VIP-PA-PWR/36XOE/ 4,0M/1756 - Front adapter



2908861

<https://www.phoenixcontact.com/us/products/2908861>

Cable type	1X1.0 [PVC]
ControlLogix® plug (1)	() = black
ControlLogix® plug (2)	() = brown
ControlLogix® plug (3)	() = red
ControlLogix® plug (4)	() = orange
ControlLogix® plug (5)	() = yellow
ControlLogix® plug (6)	() = green
ControlLogix® plug (7)	() = blue
ControlLogix® plug (8)	() = violet
ControlLogix® plug (9)	() = gray
ControlLogix® plug (10)	() = white
ControlLogix® plug (11)	() = white-black
ControlLogix® plug (12)	() = white-brown
ControlLogix® plug (13)	() = white-red
ControlLogix® plug (14)	() = white-orange
ControlLogix® plug (15)	() = white-yellow
ControlLogix® plug (16)	() = white-green
ControlLogix® plug (17)	() = white-blue
ControlLogix® plug (18)	() = white-violet
ControlLogix® plug (19)	() = white-gray
ControlLogix® plug (20)	() = brown-black
ControlLogix® plug (21)	() = brown-red
ControlLogix® plug (22)	() = brown-orange
ControlLogix® plug (23)	() = brown-yellow
ControlLogix® plug (24)	() = brown-green
ControlLogix® plug (25)	() = brown-blue
ControlLogix® plug (26)	() = brown-violet
ControlLogix® plug (27)	() = brown-gray
ControlLogix® plug (28)	() = brown-white
ControlLogix® plug (29)	() = green-black
ControlLogix® plug (30)	() = green-brown
ControlLogix® plug (31)	() = green-red
ControlLogix® plug (32)	() = green-orange
ControlLogix® plug (33)	() = green-blue
ControlLogix® plug (34)	() = green-violet
ControlLogix® plug (35)	() = green-gray
ControlLogix® plug (36)	() = green-white
Cable type	Front adapter with cable and 36 open cable ends

Environmental and real-life conditions

Ambient conditions

Degree of protection (IP20)	IP20
Ambient temperature (operation)	0 °C ... 60 °C

2908861

<https://www.phoenixcontact.com/us/products/2908861>

Ambient temperature (storage/transport)	-20 °C ... 70 °C
Altitude	< 2000 m

Approvals

UL data

Max. permissible relative humidity (operation)	< 95 %
--	--------

Standards and regulations

Standards/regulations	UL 61010-2-201
-----------------------	----------------

Notes

Notes on operation	For proper use, the specifications of the installation directive (see Downloads) must be observed. For applications or use with third-party products, the specifications, and the safety and warning instructions of the respective third-party manufacturer must also be met.
--------------------	--

2908861

<https://www.phoenixcontact.com/us/products/2908861>

Approvals

To download certificates, visit the product detail page: <https://www.phoenixcontact.com/us/products/2908861>



UL Classified

Approval ID: FILE E238705



cUL Classified

Approval ID: FILE E238705



cUL Recognized

Approval ID: FILE E196811



UL Recognized

Approval ID: FILE E196811

cULus Classified

cULus Recognized

VIP-PA-PWR/36XOE/ 4,0M/1756 - Front adapter



2908861

<https://www.phoenixcontact.com/us/products/2908861>

Classifications

ECLASS

ECLASS-11.0	27242292
ECLASS-12.0	27242292
ECLASS-13.0	27242292

ETIM

ETIM 9.0	EC002584
----------	----------

UNSPSC

UNSPSC 21.0	32151600
-------------	----------

2908861

<https://www.phoenixcontact.com/us/products/2908861>

Environmental product compliance

EU RoHS

Fulfills EU RoHS substance requirements	Yes, No exemptions
---	--------------------

China RoHS

Environment friendly use period (EFUP)	EFUP-50
	An article-related China RoHS declaration table can be found in the download area for the respective article under "Manufacturer declaration". For all articles with EFUP-E, no China RoHS declaration table issued and required.

EU REACH SVHC

REACH candidate substance (CAS No.)	No substance above 0.1 wt%
-------------------------------------	----------------------------

VIP-PA-PWR/36XOE/ 4,0M/1756 - Front adapter



2908861

<https://www.phoenixcontact.com/us/products/2908861>

Accessories

KME - Cable marker carrier

0807083

<https://www.phoenixcontact.com/us/products/0807083>



Cable marker carrier, white, unlabeled, mounting type: Assembly with cable ties, cable diameter: > 5 mm, lettering field size: 20 x 8 mm

UT 2,5 - Feed-through terminal block

3044076

<https://www.phoenixcontact.com/us/products/3044076>



Feed-through terminal block, nom. voltage: 1000 V, nominal current: 24 A, number of connections: 2, connection method: Screw connection, Rated cross section: 2.5 mm², cross section: 0.14 mm² - 4 mm², mounting type: NS 35/7,5, NS 35/15, color: gray

VIP-PA-PWR/36XOE/ 4,0M/1756 - Front adapter

2908861

<https://www.phoenixcontact.com/us/products/2908861>

PT 1,5/S - Feed-through terminal block

3208100

<https://www.phoenixcontact.com/us/products/3208100>



Feed-through terminal block, nom. voltage: 500 V, nominal current: 17.5 A, number of connections: 2, connection method: Push-in connection, 1 level, Rated cross section: 1.5 mm², cross section: 0.14 mm² - 1.5 mm², mounting type: NS 35/7,5, NS 35/15, color: gray

PT 2,5 - Feed-through terminal block

3209510

<https://www.phoenixcontact.com/us/products/3209510>



Feed-through terminal block, nom. voltage: 800 V, nominal current: 24 A, number of connections: 2, number of positions: 1, connection method: Push-in connection, Rated cross section: 2.5 mm², cross section: 0.14 mm² - 4 mm², mounting type: NS 35/7,5, NS 35/15, color: gray

VIP-PA-PWR/36XOE/ 4,0M/1756 - Front adapter

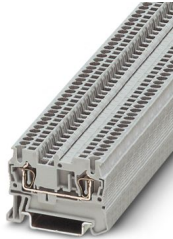
2908861

<https://www.phoenixcontact.com/us/products/2908861>

ST 1,5 - Feed-through terminal block

3031076

<https://www.phoenixcontact.com/us/products/3031076>

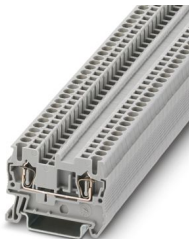


Feed-through terminal block, nom. voltage: 500 V, nominal current: 17.5 A, number of connections: 2, connection method: Spring-cage connection, 1 level, Rated cross section: 1.5 mm², cross section: 0.08 mm² - 1.5 mm², mounting type: NS 35/7,5, NS 35/15, color: gray

ST 2,5 - Feed-through terminal block

3031212

<https://www.phoenixcontact.com/us/products/3031212>



Feed-through terminal block, nom. voltage: 800 V, nominal current: 24 A, number of connections: 2, connection method: Spring-cage connection, Rated cross section: 2.5 mm², cross section: 0.08 mm² - 4 mm², mounting type: NS 35/7,5, NS 35/15, color: gray

VIP-PA-PWR/36XOE/ 4,0M/1756 - Front adapter

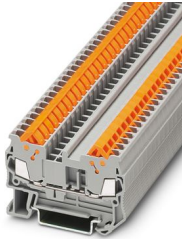
2908861

<https://www.phoenixcontact.com/us/products/2908861>

QTC 1,5 - Feed-through terminal block

3205019

<https://www.phoenixcontact.com/us/products/3205019>



Feed-through terminal block, nom. voltage: 800 V, nominal current: 17.5 A, number of connections: 2, connection method: Quick connection, 1 level, Rated cross section: 1.5 mm², cross section: 0.25 mm² - 1.5 mm², mounting type: NS 35/7,5, NS 35/15, color: gray

QTC 2,5 - Feed-through terminal block

3206416

<https://www.phoenixcontact.com/us/products/3206416>



Feed-through terminal block, nom. voltage: 800 V, nominal current: 24 A, number of connections: 2, connection method: Quick connection, 1 level, Rated cross section: 2.5 mm², cross section: 0.5 mm² - 2.5 mm², mounting type: NS 35/7,5, NS 35/15, color: gray

VIP-PA-PWR/36XOE/ 4,0M/1756 - Front adapter

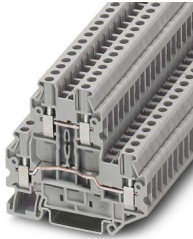
2908861

<https://www.phoenixcontact.com/us/products/2908861>

UTT 2,5 - Double-level terminal block

3044636

<https://www.phoenixcontact.com/us/products/3044636>



Double-level terminal block, nom. voltage: 500 V, nominal current: 24 A, connection method: Screw connection, Rated cross section: 2.5 mm², cross section: 0.14 mm² - 4 mm², mounting type: NS 35/7,5, NS 35/15, color: gray

PTTB 1,5/S - Double-level terminal block

3208511

<https://www.phoenixcontact.com/us/products/3208511>



Double-level terminal block, nom. voltage: 500 V, nominal current: 16 A, connection method: Push-in connection, 1st and 2nd level, Rated cross section: 1.5 mm², cross section: 0.14 mm² - 1.5 mm², mounting type: NS 35/7,5, NS 35/15, color: gray

VIP-PA-PWR/36XOE/ 4,0M/1756 - Front adapter



2908861

<https://www.phoenixcontact.com/us/products/2908861>

PTTB 2,5 - Double-level terminal block

3210567

<https://www.phoenixcontact.com/us/products/3210567>

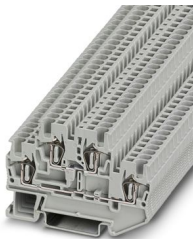


Double-level terminal block, nom. voltage: 500 V, nominal current: 22 A, connection method: Push-in connection, 1st and 2nd level, Rated cross section: 2.5 mm², cross section: 0.14 mm² - 4 mm², mounting type: NS 35/7,5, NS 35/15, color: gray

STTB 1,5 - Double-level spring-cage terminal block

3031157

<https://www.phoenixcontact.com/us/products/3031157>



Double-level spring-cage terminal block, nom. voltage: 500 V, nominal current: 17.5 A, connection method: Spring-cage connection, 1st and 2nd level, Rated cross section: 1.5 mm², cross section: 0.08 mm² - 1.5 mm², mounting type: NS 35/7,5, NS 35/15, color: gray

VIP-PA-PWR/36XOE/ 4,0M/1756 - Front adapter

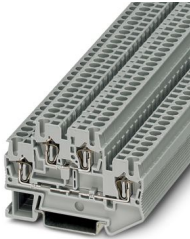
2908861

<https://www.phoenixcontact.com/us/products/2908861>

STTB 2,5 - Double-level spring-cage terminal block

3031270

<https://www.phoenixcontact.com/us/products/3031270>

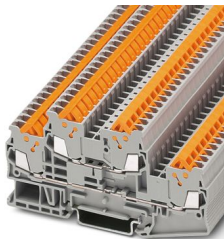


Double-level spring-cage terminal block, nom. voltage: 500 V, nominal current: 22 A, connection method: Spring-cage connection, Rated cross section: 2.5 mm², cross section: 0.08 mm² - 4 mm², mounting type: NS 35/7,5, NS 35/15, color: gray

QTTCB 1,5 - Double-level terminal block

3205116

<https://www.phoenixcontact.com/us/products/3205116>



Double-level terminal block, nom. voltage: 500 V, nominal current: 17.5 A, connection method: Quick connection, 1st and 2nd level, Rated cross section: 1.5 mm², cross section: 0.25 mm² - 1.5 mm², mounting type: NS 35/7,5, NS 35/15, color: gray

VIP-PA-PWR/36XOE/ 4,0M/1756 - Front adapter



2908861

<https://www.phoenixcontact.com/us/products/2908861>

UT 2,5-TWIN - Feed-through terminal block

3044513

<https://www.phoenixcontact.com/us/products/3044513>



Feed-through terminal block, nom. voltage: 500 V, nominal current: 24 A, number of connections: 3, connection method: Screw connection, 1 level, Rated cross section: 2.5 mm², cross section: 0.14 mm² - 4 mm², mounting type: NS 35/7,5, NS 35/15, color: gray

PT 1,5/S-TWIN - Feed-through terminal block

3208155

<https://www.phoenixcontact.com/us/products/3208155>



Feed-through terminal block, nom. voltage: 500 V, nominal current: 17.5 A, number of connections: 3, connection method: Push-in connection, 1 level, Rated cross section: 1.5 mm², cross section: 0.14 mm² - 1.5 mm², mounting type: NS 35/7,5, NS 35/15, color: gray

VIP-PA-PWR/36XOE/ 4,0M/1756 - Front adapter

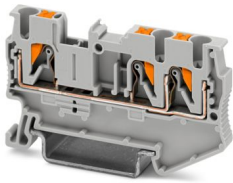
2908861

<https://www.phoenixcontact.com/us/products/2908861>

PT 2,5-TWIN - Feed-through terminal block

3209549

<https://www.phoenixcontact.com/us/products/3209549>

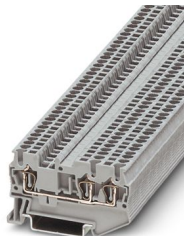


Feed-through terminal block, nom. voltage: 800 V, nominal current: 24 A, number of connections: 3, connection method: Push-in connection, Rated cross section: 2.5 mm², cross section: 0.14 mm² - 4 mm², mounting type: NS 35/7,5, NS 35/15, color: gray

ST 1,5-TWIN - Feed-through terminal block

3031128

<https://www.phoenixcontact.com/us/products/3031128>



Feed-through terminal block, nom. voltage: 500 V, nominal current: 17.5 A, number of connections: 3, connection method: Spring-cage connection, Rated cross section: 1.5 mm², cross section: 0.08 mm² - 1.5 mm², mounting type: NS 35/7,5, NS 35/15, color: gray

VIP-PA-PWR/36XOE/ 4,0M/1756 - Front adapter



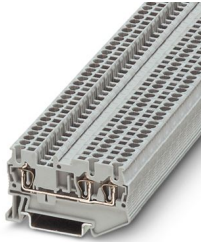
2908861

<https://www.phoenixcontact.com/us/products/2908861>

ST 2,5-TWIN - Feed-through terminal block

3031241

<https://www.phoenixcontact.com/us/products/3031241>



Feed-through terminal block, nom. voltage: 800 V, nominal current: 24 A, number of connections: 3, connection method: Spring-cage connection, Rated cross section: 2.5 mm², cross section: 0.08 mm² - 4 mm², mounting type: NS 35/7,5, NS 35/15, color: gray

QTC 1,5-TWIN - Feed-through terminal block

3205048

<https://www.phoenixcontact.com/us/products/3205048>



Feed-through terminal block, nom. voltage: 800 V, nominal current: 17.5 A, number of connections: 3, connection method: Quick connection, 1 level, Rated cross section: 1.5 mm², cross section: 0.25 mm² - 1.5 mm², mounting type: NS 35/7,5, NS 35/7,5, color: gray

VIP-PA-PWR/36XOE/ 4,0M/1756 - Front adapter

2908861

<https://www.phoenixcontact.com/us/products/2908861>

QTC 2,5-TWIN - Feed-through terminal block

3206445

<https://www.phoenixcontact.com/us/products/3206445>

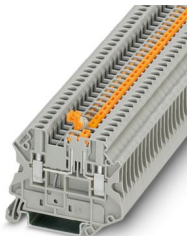


Feed-through terminal block, nom. voltage: 800 V, nominal current: 24 A, number of connections: 3, connection method: Quick connection, 1 level, Rated cross section: 2.5 mm², cross section: 0.5 mm² - 2.5 mm², mounting type: NS 35/7,5, NS 35/7,5, color: gray

UT 2,5-MT - Knife-disconnect terminal block

3046362

<https://www.phoenixcontact.com/us/products/3046362>



Knife-disconnect terminal block, nom. voltage: 400 V, nominal current: 20 A, Thermal continuous current I_{th} : 20 A, connection method: Screw connection, Rated cross section: 2.5 mm², cross section: 0.14 mm² - 4 mm², mounting: NS 35/7,5, NS 35/15, color: gray

VIP-PA-PWR/36XOE/ 4,0M/1756 - Front adapter

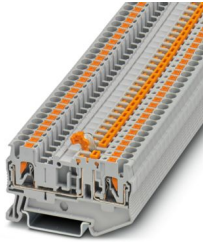
2908861

<https://www.phoenixcontact.com/us/products/2908861>

PT 2,5-MT - Knife-disconnect terminal block

3210156

<https://www.phoenixcontact.com/us/products/3210156>

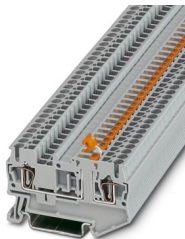


Knife-disconnect terminal block, nom. voltage: 400 V, nominal current: 20 A, connection method: Push-in connection, Rated cross section: 2.5 mm², cross section: 0.14 mm² - 4 mm², mounting: NS 35/7,5, NS 35/15, color: gray

ST 2,5-MT - Knife-disconnect terminal block

3036343

<https://www.phoenixcontact.com/us/products/3036343>



Knife-disconnect terminal block, nom. voltage: 400 V, nominal current: 20 A, 1 level, connection method: Spring-cage connection, Rated cross section: 2.5 mm², cross section: 0.08 mm² - 4 mm², mounting: NS 35/7,5, NS 35/15, color: gray

VIP-PA-PWR/36XOE/ 4,0M/1756 - Front adapter

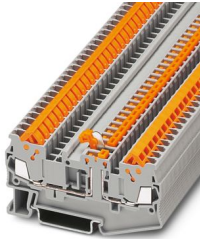
2908861

<https://www.phoenixcontact.com/us/products/2908861>

QTC 1,5-MT - Knife-disconnect terminal block

3205103

<https://www.phoenixcontact.com/us/products/3205103>



Knife-disconnect terminal block, nom. voltage: 400 V, nominal current: 17.5 A, 1 level, connection method: Quick connection, Rated cross section: 1.5 mm², cross section: 0.25 mm² - 1.5 mm², mounting: NS 35/7,5, NS 35/15, color: gray

QTC 2,5-MT - Knife-disconnect terminal block

3206487

<https://www.phoenixcontact.com/us/products/3206487>



Knife-disconnect terminal block, nom. voltage: 400 V, nominal current: 20 A, 1 level, connection method: Quick connection, Rated cross section: 2.5 mm², cross section: 0.5 mm² - 2.5 mm², mounting: NS 35/7,5, NS 35/15, color: gray

VIP-PA-PWR/36XOE/ 4,0M/1756 - Front adapter



2908861

<https://www.phoenixcontact.com/us/products/2908861>

SF-SL 1,0X5,5-150 - Screwdriver

1212552

<https://www.phoenixcontact.com/us/products/1212552>



Screwdriver, bladed (lasered), size: 1.0 x 5.5 x 150 mm, 2-component grip, with non-slip grip

ZBF10:UNBEDRUCKT - Zack Marker strip, flat

0809997

<https://www.phoenixcontact.com/us/products/0809997>



Zack Marker strip, flat, Strip, white, unlabeled, can be labeled with: CMS-P1-PLOTTER, PLOTMARK, mounting type: snapped, for terminal block width: 10 mm, lettering field size: 5.15 x 10 mm, Number of individual labels: 10

Phoenix Contact 2024 © - all rights reserved
<https://www.phoenixcontact.com>

Phoenix Contact USA
586 Fulling Mill Road
Middletown, PA 17057, United States
(+717) 944-1300
info@phoenixcon.com