

WP 6185-WHPS - Web panel



1290807

<https://www.phoenixcontact.com/us/products/1290807>

Please be informed that the data shown in this PDF document is generated from our online catalog. Please find the complete data in the user documentation. Our general terms of use for downloads are valid.

IP66 Touch panel with 18.5-inch widescreen (16:9) HD, PCAP display, Software: Qt Browser



Your advantages

- Easy startup – just enter the IP and URL
- Flexible, thanks to open web standard and free choice of web server and visualization software
- No security updates are required for JAVA or Flash plug-ins thanks to HTML5
- Ideal for use with PLCnext Engineer or CODESYS
- Embedded Linux operating system
- Visualization of self-programmed JavaScript applications possible

Commercial data

Item number	1290807
Packing unit	1 pc
Note	Made to order (non-returnable)
Sales key	DR17
Product key	DRCADF
GTIN	4063151523046
Weight per piece (including packing)	2,260 g
Weight per piece (excluding packing)	2,100 g
Customs tariff number	84714100
Country of origin	TW

Technical data

Product properties

Product type	Operator panel
--------------	----------------

Computer data

Processor	Arm® Cortex®-A53, 1.6 GHz
Operating system	Yocto/Linux®
Data storage system	Flash eMMC, 8 GB
Slots	1x microSD

Display

Display type	46.9 cm/18.5" TFT
Screen resolution	1920 x 1080 Pixel(s) (Full HD)
Touch technology	projective-capacitive (PCAP)
Display lighting type	LED
Brightness	350 cd/m², typical (adjustable)
MTBF	50000 h
Color spectrum	16.7 million colors
Reading angle left	89.00 °
Reading angle right	89.00 °
Reading angle top	89.00 °
Reading angle bottom	89.00 °

Interfaces

Interfaces	2x USB Host 2.0, 1x USB Type C 3.0 1x COM (RS-232/422/485)
Optional interfaces	Without optional interface
Network	1x Ethernet (10/100/1000 Mbps), RJ45
Bus system	without

System properties

User software	QT browser
---------------	------------

System requirements

Runtime system	Qt Browser
----------------	------------

Electrical properties

Supply

Supply voltage	24 V DC
Supply voltage range	18 V ... 32 V
Power supply unit	24 V DC ±20 %
Max. current consumption	1.81 A (24 V DC)
Typical current consumption	1.34 A (24 V DC)

1290807

<https://www.phoenixcontact.com/us/products/1290807>

Real-time clock

Realtime clock	Integrated (battery backup)
----------------	-----------------------------

Mounting

Mounting type	Front mounting
---------------	----------------

Material specifications

Material front plate	Aluminum (natural anodized)
Housing material	Aluminum cast alloy, powder-coated

Connection data

Connection method	Screw connection
Conductor cross section, rigid	0.2 mm ² ... 2.5 mm ²
Conductor cross section, flexible	0.2 mm ² ... 2.5 mm ²
Conductor cross section AWG	24 ... 12
Stripping length	7 mm

Environmental and real-life conditions

Ambient conditions

Degree of protection	IP66 (front), IP20 (back)
Ambient temperature (operation)	0 °C ... 50 °C
Ambient temperature (storage/transport)	-20 °C ... 60 °C
Permissible humidity (operation)	10 % ... 95 % (non-condensing)
Permissible humidity (storage/transport)	10 % ... 95 % (non-condensing)
Vibration (operation)	1g

Dimensions

External dimensions

Width / Height / Depth	465 mm / 310 mm / 51 mm (Dimensions of the front plate)
------------------------	---

Installation dimensions

Width / Height / Installation depth	455 mm / 300 mm / (Installation cutout)
-------------------------------------	---

1290807

<https://www.phoenixcontact.com/us/products/1290807>

Approvals

To download certificates, visit the product detail page: <https://www.phoenixcontact.com/us/products/1290807>



IECEE CB Scheme
Approval ID: US-39088-UL



EAC
Approval ID: RU C-DE.A*08.B01708



UL Listed
Approval ID: FILE E 238705



cUL Listed
Approval ID: FILE E 238705



IECEE CB Scheme
Approval ID: US-39088-UL



EAC
Approval ID: RU C-DE.A*08.B01708



cUL Listed
Approval ID: FILE E 238705



UL Listed
Approval ID: FILE E 238705

1290807

<https://www.phoenixcontact.com/us/products/1290807>

Classifications

ECLASS

ECLASS-11.0	27330201
ECLASS-12.0	27330201
ECLASS-13.0	27330201

ETIM

ETIM 9.0	EC001412
----------	----------

UNSPSC

UNSPSC 21.0	43211900
-------------	----------

1290807

<https://www.phoenixcontact.com/us/products/1290807>

Environmental product compliance

EU RoHS

Fulfills EU RoHS substance requirements	Yes
Exemption	7(a), 7(c)-I

China RoHS

Environment friendly use period (EFUP)	EFUP-15
	An article-related China RoHS declaration table can be found in the download area for the respective article under "Manufacturer declaration". For all articles with EFUP-E, no China RoHS declaration table issued and required.

EU REACH SVHC

REACH candidate substance (CAS No.)	Lead(CAS: 7439-92-1)
-------------------------------------	----------------------

WP 6185-WHPS - Web panel

1290807

<https://www.phoenixcontact.com/us/products/1290807>



Accessories

TP6/WP6/VL3 MOUNTING HW (2PCS) - Panel-mount flange

1289537

<https://www.phoenixcontact.com/us/products/1289537>



Mounting kit includes two retaining clips

TP/WP 6000 RTC BATTERY KIT - Battery

1289761

<https://www.phoenixcontact.com/us/products/1289761>



Replacement battery for TP 6000 and WP 6000 panels, and VL3 BPC/PPC/UPC.

WP 6185-WHPS - Web panel

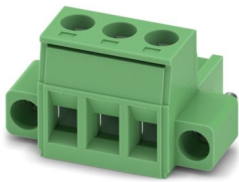
1290807

<https://www.phoenixcontact.com/us/products/1290807>

MSTB 2,5/ 3-STF-5,08 - PCB connector

1777992

<https://www.phoenixcontact.com/us/products/1777992>



PCB connector, nominal cross section: 2.5 mm², color: green, nominal current: 12 A, rated voltage (III/2): 320 V, contact surface: Tin, contact connection type: Socket, number of potentials: 3, number of rows: 1, number of positions: 3, number of connections: 3, product range: MSTB 2,5/...-STF, pitch: 5.08 mm, connection method: Screw connection with tension sleeve, screw head form: L Slotted, conductor/PCB connection direction: 0 °, locking clip: - without locking clip, plug-in system: COMBICON MSTB 2,5, locking: Screw locking mechanism, mounting: Screw flange, type of packaging: packed in cardboard

MICROSDHC-16GB - Memory

1154696

<https://www.phoenixcontact.com/us/products/1154696>



Industrial grade 16 GB MicroSDHC 3DTLC

WP 6185-WHPS - Web panel

1290807

<https://www.phoenixcontact.com/us/products/1290807>



MICROSDHC-32GB - Memory

1154699

<https://www.phoenixcontact.com/us/products/1154699>

Industrial grade 32 GB MicroSDHC 3DTLC



Phoenix Contact 2024 © - all rights reserved

<https://www.phoenixcontact.com>

Phoenix Contact USA
586 Fulling Mill Road
Middletown, PA 17057, United States
(+717) 944-1300
info@phoenixcon.com