

Product Datasheet

Product Name: Basic Rack PDU

SKU: AKB013041U

Product Code: K10ATJ5-24A3606A1791EES01-2QT

Overview

The Apislogik Basic rack PDU provides rack power distribution via a single input with multiple output receptacles and distributes power from low amperage single-phase circuits to higher-power 3-phase solutions. There are various types of input plugs, output receptacles, and protective devices available for mixing and matching. Installation methods, colors, and sizes can be chosen to meet your specific requirements.

Features

■ Input

Support for IEC60309, NEMA, UK, SCHUKO, HARTING, TEC etc.

■ Output

Support for C13, C19, C39, NEMA, UK, SCHUKO, IEC self-locking socket.

■ Hydraulic magnetic circuit breaker

Stable operation in environments with a temperature of 55°C/131°F. Provides respective protection for each branch of output. (Note: Not all models provide hydraulic magnetic circuit breakers)

■ Hot-swap LED indicator lights

Customers can replace hot-swap LED indicator lights without powering off the system. (Note: Not all models have hot-swap LED indicator lights)

■ Mounting method

Toolless mounting peg and bracket mounting, two types of mounting options are available for selection.

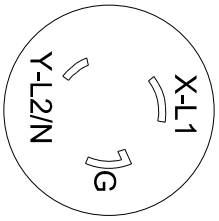
Specifications

Input Parameters	
Input voltage	200-240 V AC;2W+PE
Max current(phase)	30A
Rate current (phase)	24A
Input frequency	50/60Hz
Power Load	7.36KW
Input plug	NEMA L6-30P
Input wire	(3m) 3*10AWG
Output Parameters	
Output voltage	200-240 V AC
Rate current(phase)	24A
Output frequency	50/60Hz
Outlets	(36)IEC C13 (6)IEC C19
Protective Device	
Circuit breaker	2*20A/2P
Hot-swap LED indicator lights	/
Physical Parameters	
Rack mount	0U
Shell color	Black
Shell material	Aluminum Alloy
Power input method	Top feed
Mounting location	dual-sided
Mounting mode	Peg
Dimensions(H*W*D)	1791mm*55.6mm*49mm
Net weight	9KG
Shipping dimensions(H*W*D)	2100mm*87mm*115mm
Environmental Parameters	
Operating elevation	0-3000m (0-10000 ft)
Operation Temperature	-10~60 °C
Humidity(operation/storage)	5-95%RH, non-condensing
Storage Temperature	-20~70 °C
Storage elevation	0-15000m (0-50000 ft)
Compliance	
Certification	UL、CUL

* Product Characteristics subject to change without prior notice.

* Disclaimer: This documentation is not intended as a substitute for and is not to be used for determining suitability or reliability of these products for specific user applications

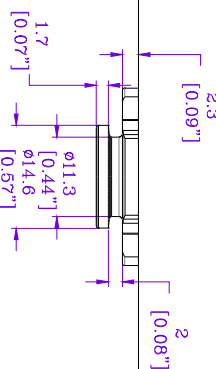
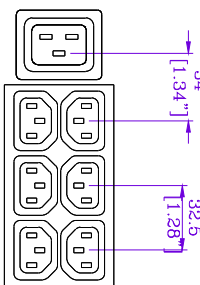
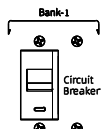
Version History					
Version	Description	Draft	Review	Approval	Date
V1.2	First version	Jun Xiong	LQ Li	YH Chen	6/20/2023



(NEMA L6-30P PLUG-ENLARGED)

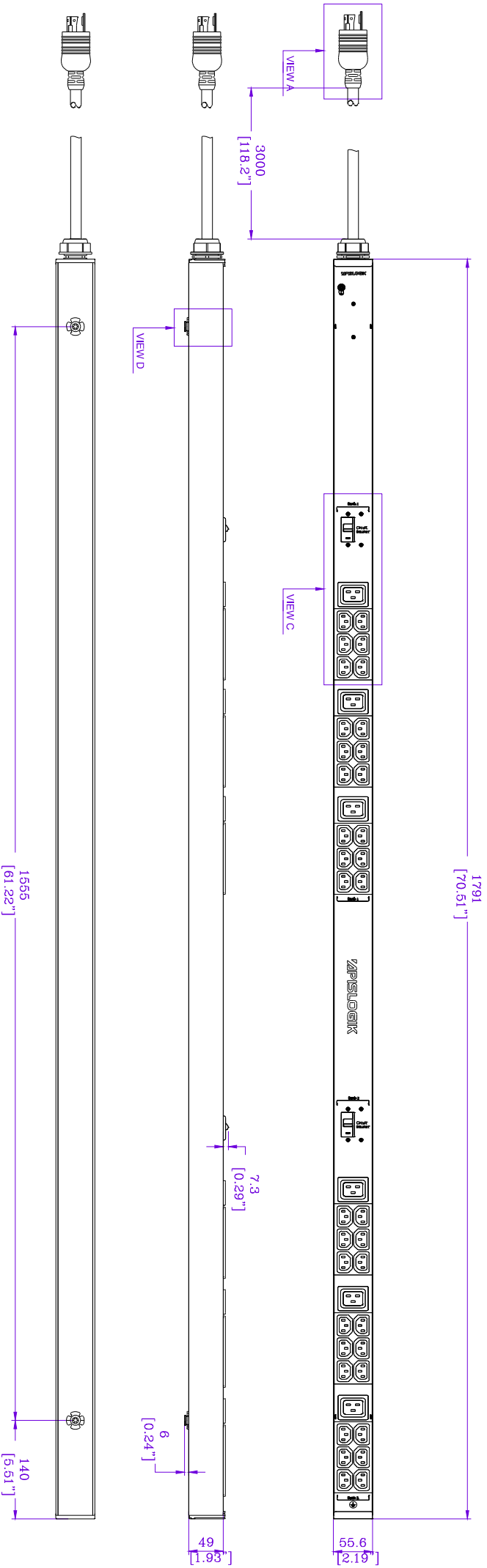
VIEW A

VIEW B



VIEW C

VIEW D

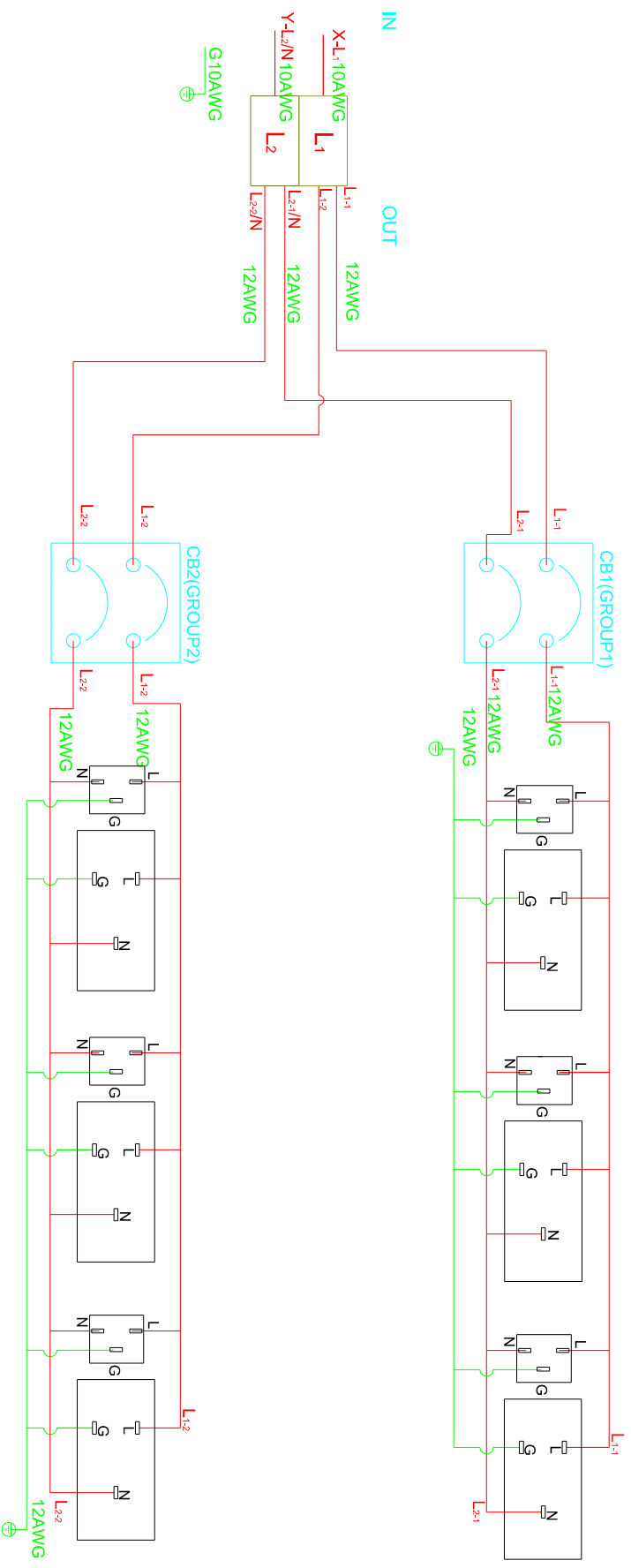


REV.	DESCRIPTION	DRAWN	CHECKED	APP'D	DATE	NOTES:	Product Name: Basic Rack PDU	Rev: Unit: RU	SKU
E						1. INSTALLATION SHALL COMPLY WITH ALL APPLICABLE NATIONAL, STATE AND LOCAL CODES.	Input Cable: 3m 3"10AWG	Incoming Mode: Top Feed <td>AK8013041U</td>	AK8013041U
D						2. PLEASE REFER TO PRODUCT DOCUMENTATION FOR FURTHER INFORMATION.	Outlet: (36) IEC C13	Mounting Location: Dual-Sided	
C						3. UNLESS OTHERWISE SPECIFIED, ALL DIMENSIONS ARE IN MILLIMETERS (INCHES).	Circuit Breaker: (2) 20A/2P	Enclosure Color: Black	
B							Enclosure Material: Aluminum Alloy		
A	First edition	Jun Xiong	LQ LI	YH Chen	6/20/2023	APISMOON PROPRIETARY AND CONFIDENTIAL INFORMATION This document is the property of APISMOON and contains proprietary information of APISMOON. This document is loaned on the express condition that neither it nor the information contained therein shall be disclosed to others without the express written consent of APISMOON, and that the information shall be used by the recipient only as approved expressly by APISMOON. This document shall be returned to APISMOON upon its request.	INPUT: 200-240 V AC, 2W+PE, 50/60Hz, 24A OUTPUT: 200-240 V AC, 16A PER BANK, 24A TOTAL C13: 12A PER OUTLET, 16A PER GANG C19: 16A PER OUTLET		



DWG NO.	SKU
HW/039230620302	AK8013041U
MODEL	
PRODUCT CODE	
K10A1T15-24A3606A1791EES01-20T	
SHEET 1 OF 2	REV. A

Symbol Interpretation	
XT	Terminal blocks
TA	Current transformer
PA	Intelligent meter
XS	jack
PE	landing
IN	Input
OUT	Output
F	Hot plug lightning protection
CB	Circuit breaker
S1/S2	Current transformer Input/output

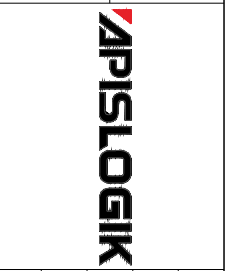


Note: The color of the connecting line is only for reference to the phase pole, and the actual color is subject to the actual material.

REV.	DESCRIPTION	DRAWN	CHECKEN	APPD	DATE
A	First edition	Jun Xiong	LQ LI	YH Chen	6/20/2023
B					
C					
D					
E					

NOTES:
 1. INSTALLATION SHALL COMPLY WITH ALL APPLICABLE NATIONAL, STATE AND LOCAL CODES.
 2. PLEASE REFER TO PRODUCT DOCUMENTATION FOR FURTHER INFORMATION.
 3. UNLESS OTHERWISE SPECIFIED, ALL DIMENSIONS ARE IN MILLIMETERS (INCHES).
 APISMOON PROPRIETARY AND CONFIDENTIAL INFORMATION
 This document is the property of APISMOON and contains proprietary information of APISMOON. This document is loaned on the express condition that neither APISMOON nor the information contained herein shall be disclosed to others without the express written consent of APISMOON. This document shall be returned to APISMOON upon its request.

Product Name: Basic Rack PDU
 Input Cable: 3m 3T10AWG
 Outer: (36)IEC C13
 (6)IEC C19
 Circuit Breaker: (2)20A/2P
 Enclosure Material: Aluminum Alloy
 Rack Unit: 1U
 Incoming Mode: Top Feed
 Mounting Location: Dual-Sided
 Enclosure Color: Black
 INPUT: 200-240 V AC, 2W, PE, 50/60Hz, 24A
 OUTPUT: 200-240 V AC, 16A PER BANK, 24A TOTAL
 C13: 12A PER OUTLET, 16A PER GANG
 C19: 16A PER OUTLET



DWG NO.	SKU
HW/039220620302	AKB013041U
MODEL	
PRODUCT CODE	
K10A1U5-24A3606A1791EEES01-2QT	
SHEET 2 OF 2	REV. A

DO NOT SCALE DRAWING