

# TP 6121-WXPS - Touch panel



1190420

<https://www.phoenixcontact.com/us/products/1190420>

Please be informed that the data shown in this PDF document is generated from our online catalog. Please find the complete data in the user documentation. Our general terms of use for downloads are valid.

IP66 Touch panel with 12.1-inch widescreen (16:9) XGA, PCAP display, software: Visu+ RT



## Your advantages

- PCAP touch interface, ten-point multi touch control
- Fanless design
- Dual USB 2.0 ports
- Integrated Visu+ visualization software
- Ideal for use with PLCnext
- Configurable multifunction serial port

## Commercial data

Item number	1190420
Packing unit	1 pc
Note	Made to order (non-returnable)
Sales key	DR17
Product key	DRCADC
GTIN	4063151239985
Weight per piece (including packing)	2,260 g
Weight per piece (excluding packing)	2,100 g
Customs tariff number	84714100
Country of origin	TW

# TP 6121-WXPS - Touch panel



1190420

<https://www.phoenixcontact.com/us/products/1190420>

## Technical data

### Product properties

Product type	Operator panel
--------------	----------------

### Computer data

Processor	Arm® Cortex®-A9, 800 MHz
Operating system	Windows® Embedded Compact 7
Data storage system	Flash eMMC, 8 GB
Slots	1x microSD

### Display

Display type	30.7 cm/12.1" TFT
Screen resolution	1280 x 800 Pixel(s) (WXGA)
Touch technology	projective-capacitive (PCAP)
Display lighting type	LED
Brightness	400 cd/m², typical (adjustable)
MTBF	50000 h
Color spectrum	16.7 million colors
Reading angle left	88.00 °
Reading angle right	88.00 °
Reading angle top	88.00 °
Reading angle bottom	88.00 °

### Interfaces

Interfaces	2x USB Host 2.0 1x COM (RS-232/422/485)
Optional interfaces	Without optional interface
Network	1x Ethernet (10/100/1000 Mbps), RJ45
Bus system	without

### System properties

User software	Visu+
---------------	-------

### System requirements

Runtime system	Visu+ Runtime
----------------	---------------

### Electrical properties

#### Supply

Supply voltage	24 V DC
Supply voltage range	18 V ... 32 V
Power supply unit	24 V DC ±20 %
Max. current consumption	1.81 A (max. system configuration at 24 V DC)
Typical current consumption	0.9 A (max. system configuration at 24 V DC)

# TP 6121-WXPS - Touch panel



1190420

<https://www.phoenixcontact.com/us/products/1190420>

## Real-time clock

Realtime clock	Integrated (battery backup)
----------------	-----------------------------

## Mounting

Mounting type	Front mounting
---------------	----------------

## Material specifications

Material front plate	Aluminum (natural anodized)
Housing material	Aluminum cast alloy, powder-coated

## Connection data

Connection method	Screw connection
Conductor cross section, rigid	0.2 mm <sup>2</sup> ... 2.5 mm <sup>2</sup>
Conductor cross section, flexible	0.2 mm <sup>2</sup> ... 2.5 mm <sup>2</sup>
Conductor cross section AWG	24 ... 12
Conductor cross section, flexible, with ferrule, with plastic sleeve	0.25 mm <sup>2</sup> ... 2.5 mm <sup>2</sup>
Conductor cross section flexible, with ferrule without plastic sleeve	0.25 mm <sup>2</sup> ... 2.5 mm <sup>2</sup>
Stripping length	7 mm

## Environmental and real-life conditions

### Ambient conditions

Degree of protection	IP66 (front), IP20 (back)
Ambient temperature (operation)	-20 °C ... 50 °C
Ambient temperature (storage/transport)	-25 °C ... 85 °C
Permissible humidity (operation)	5 % ... 85 % (non-condensing)
Permissible humidity (storage/transport)	5 % ... 85 % (non-condensing)
Vibration (operation)	1g

## Dimensions

### External dimensions

Width / Height / Depth	302 mm / 229 mm / 51 mm (Dimensions of the front plate)
------------------------	---

### Installation dimensions

Width / Height / Installation depth	292 mm / 219 mm / (Installation cutout)
-------------------------------------	---

# TP 6121-WXPS - Touch panel



1190420

<https://www.phoenixcontact.com/us/products/1190420>

## Approvals

To download certificates, visit the product detail page: <https://www.phoenixcontact.com/us/products/1190420>



**EAC**

Approval ID: RU C-DE.A\*08.B01708



**IECEE CB Scheme**

Approval ID: US-39088-UL



**UL Listed**

Approval ID: FILE E 238705



**cUL Listed**

Approval ID: FILE E 238705



**IECEE CB Scheme**

Approval ID: US-39088-UL



**EAC**

Approval ID: RU C-DE.A\*08.B01708



**cUL Listed**

Approval ID: FILE E 238705



**UL Listed**

Approval ID: FILE E 238705

# TP 6121-WXPS - Touch panel



1190420

<https://www.phoenixcontact.com/us/products/1190420>

## Classifications

### ECLASS

ECLASS-11.0	27330201
ECLASS-12.0	27330201
ECLASS-13.0	27330201

### ETIM

ETIM 9.0	EC001412
----------	----------

### UNSPSC

UNSPSC 21.0	43211900
-------------	----------

# TP 6121-WXPS - Touch panel



1190420

<https://www.phoenixcontact.com/us/products/1190420>

## Environmental product compliance

### EU RoHS

Fulfills EU RoHS substance requirements	Yes
Exemption	7(a), 7(c)-I

### China RoHS

Environment friendly use period (EFUP)	EFUP-15
	An article-related China RoHS declaration table can be found in the download area for the respective article under "Manufacturer declaration". For all articles with EFUP-E, no China RoHS declaration table issued and required.

### EU REACH SVHC

REACH candidate substance (CAS No.)	Lead(CAS: 7439-92-1)
-------------------------------------	----------------------

# TP 6121-WXPS - Touch panel

1190420

<https://www.phoenixcontact.com/us/products/1190420>



## Accessories

### TP6/WP6/VL3 MOUNTING HW (2PCS) - Panel-mount flange

1289537

<https://www.phoenixcontact.com/us/products/1289537>



Mounting kit includes two retaining clips

---

### TP/WP 6000 RTC BATTERY KIT - Battery

1289761

<https://www.phoenixcontact.com/us/products/1289761>



Replacement battery for TP 6000 and WP 6000 panels, and VL3 BPC/PPC/UPC.

# TP 6121-WXPS - Touch panel

1190420

<https://www.phoenixcontact.com/us/products/1190420>



## MICROSDHC-16GB - Memory

1154696

<https://www.phoenixcontact.com/us/products/1154696>



Industrial grade 16 GB MicroSDHC 3DTLC

---

## MICROSDHC-32GB - Memory

1154699

<https://www.phoenixcontact.com/us/products/1154699>



Industrial grade 32 GB MicroSDHC 3DTLC



# TP 6121-WXPS - Touch panel

1190420

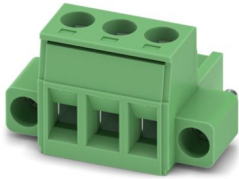
<https://www.phoenixcontact.com/us/products/1190420>



## MSTB 2,5/ 3-STF-5,08 - PCB connector

1777992

<https://www.phoenixcontact.com/us/products/1777992>



PCB connector, nominal cross section: 2.5 mm<sup>2</sup>, color: green, nominal current: 12 A, rated voltage (III/2): 320 V, contact surface: Tin, contact connection type: Socket, number of potentials: 3, number of rows: 1, number of positions: 3, number of connections: 3, product range: MSTB 2,5/...-STF, pitch: 5.08 mm, connection method: Screw connection with tension sleeve, screw head form: L Slotted, conductor/PCB connection direction: 0 °, locking clip: - without locking clip, plug-in system: COMBICON MSTB 2,5, locking: Screw locking mechanism, mounting: Screw flange, type of packaging: packed in cardboard

---

Phoenix Contact 2024 © - all rights reserved

<https://www.phoenixcontact.com>

Phoenix Contact USA  
586 Fulling Mill Road  
Middletown, PA 17057, United States  
(+717) 944-1300  
[info@phoenixcon.com](mailto:info@phoenixcon.com)